

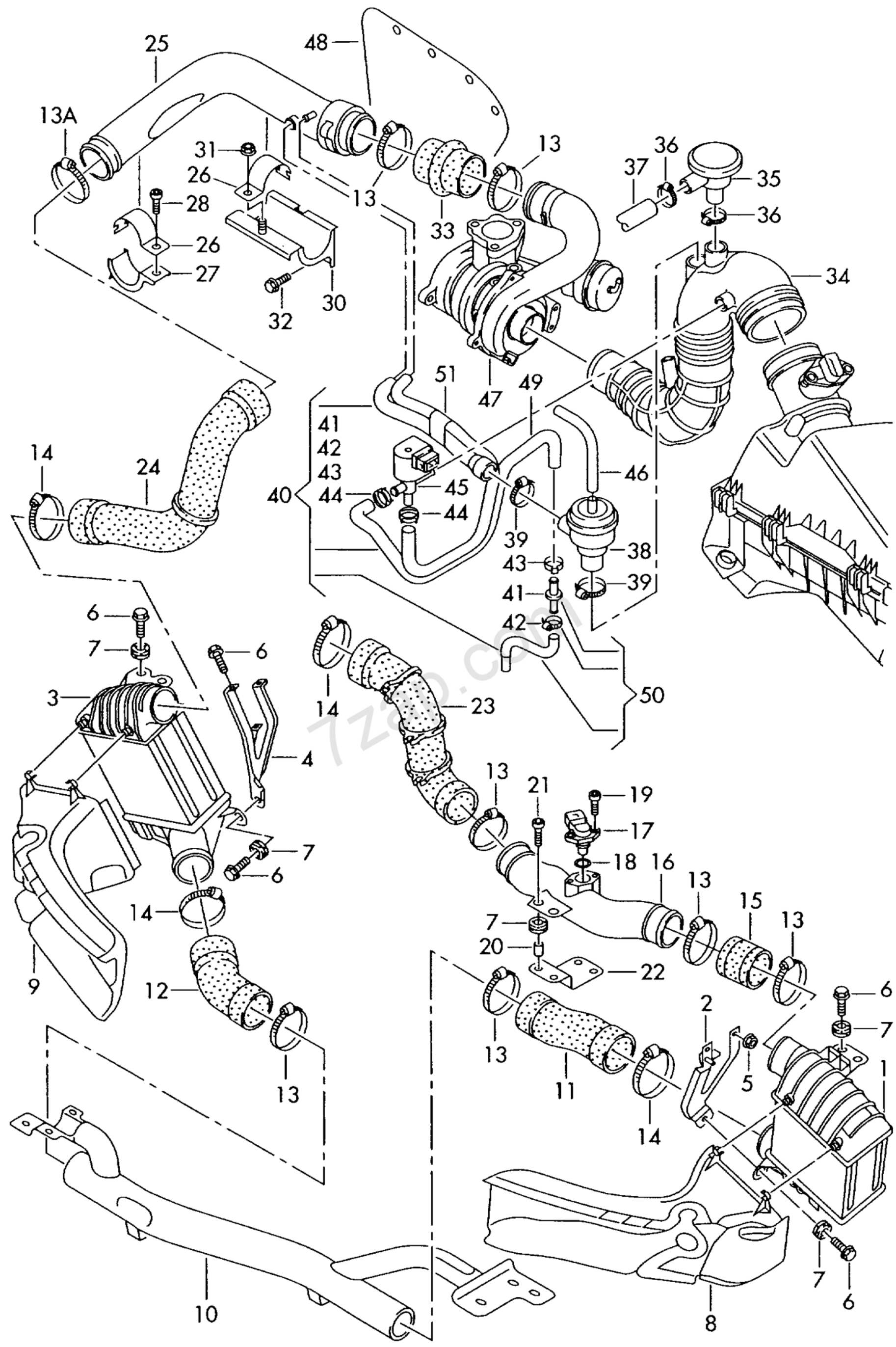
Expert Road Accident Support
Slater and Gordon is One Of Britain's Leading Road Traffic Accidents Claims Firms.

Ad Slater & Gordon

Open

7zap -> Catalog Audi [europa] -> Audi A3/S3/Sportb./Lim./qu -> Group Parts -> engine -> charge air cooler

charge air cooler - Audi A3/S3/Sportb./Lim./qu(A3) [EUROPA 2002 year]



Nº	part code	title	note	quantity	data model	information
		charge air cooler			AMK,BAM,AUL	
(1)	8L9 145 805 H	charge air cooler	left	1		
2	8L9 145 808 A	bracket	left	1		
3	8L9 145 806 B	charge air cooler	right	1		
4	1J0 145 808 C	bracket	right	1		
5	N 90286703	hex. nut, self-locking with washer	M6	2		
6	N 90750601	hexagon head bolt (combi)	M6X30	6		
7	867 129 669	grommet		6		
8	8L9 121 467	air guide	left	1		
<div>Contact Our RTA Team Today</div> <div>Ad Slater & Gordon</div> <div>Open</div>						
9	8L9 121 468 A	air guide	right	1		
10		see illustration:	199-20			
11	8N0 145 838 A	pressure hose	left lower	1		
12	8N0 145 856	pressure hose	right lower	1		
13	N 90950201	clamp	40-60X9	X		
14	N 90952501	clamp	60-80X9	X		
15	8L9 145 845	pressure hose	left upper	1		
16	8L9 145 937	pressure hose pressure sensor L >> 8L-1-080 000	SENSOR 18 MM	1		
(16)	8L9 145 937 A	pressure hose pressure sensor L 8L-1-080 001>>	12 MM	1		
17	038 906 051	pressure sensor F >> 8L-1-080 000	18 MM	1	2009.00 - 2012.00	
(17)	038 906 051 D	pressure sensor F 8L-1-080 001>>	12 MM	1	2001.01 - 2006.03	
18	N 90563801	o-ring	13,94X2,62	1		
19	N 0147042	socket head bolt with hexagon socket head	M6X20	2		
20	1H0 121 278	spacer bush		2		
21	N 0147053	socket head bolt with hexagon socket head	M6X25	2		
22	8L9 145 875	hose bracket		1		
23	8L9 145 790 B	pressure hose	left upper	1		
24	8L9 145 708 G	pressure hose	right upper	1		
25	06A 145 731 M	pressure pipe		1		
26	06A 145 545 F	angled bracket	upper	2		
27	06A 145 548 A	angled bracket	lower	1		
28	N 10303607	socket head bolt with inner multipoint head	M8X16	1		
30	06A 145 756 K	bracket		1		
31	N 01508311	hexagon collar nut	M8	1		
32	N 10155901	hex collared bolt	M8X20	2		
33	06A 145 832 L	pressure hose		1		
34		see illustration:	129-15			
35	034 129 101 B	pressure-relief valve		1		
(35)	06A 129 101 D	pressure-relief valve for vehicles with electronic stabilisation program -esp-		1		
36	N 90561801	clamp	16-28X9X0,5	1		
37		see illustration:	103-85			
38	06A 145 710 N	cut-off valve		1		
39	N 10258101	clamp	23-35X9X0,5	2		
40	8L9 145 743	pressure controlline		1	AUL	
-	8L9 145 718 B	hose		1		
(40)	8L9 145 743 A	pressure controlline		1	AMK,BAM	
-	8L9 145 718 F	hose		1		
44	N 90686701	spring band clamp	14X12	2		
45	058 906 283 F	solenoid valve		1		
46		see illustration:	133-32			
47		see illustration:	145-50			
48	06A 129 597 T	warm air deflector		1		