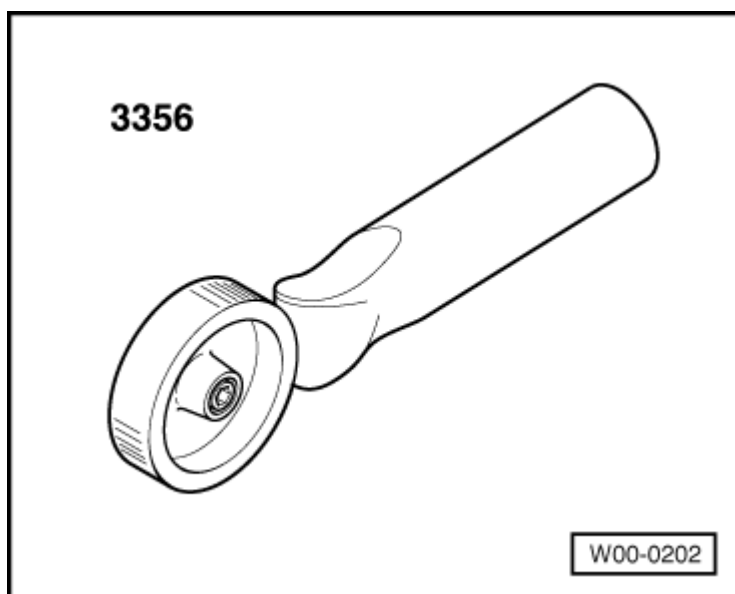


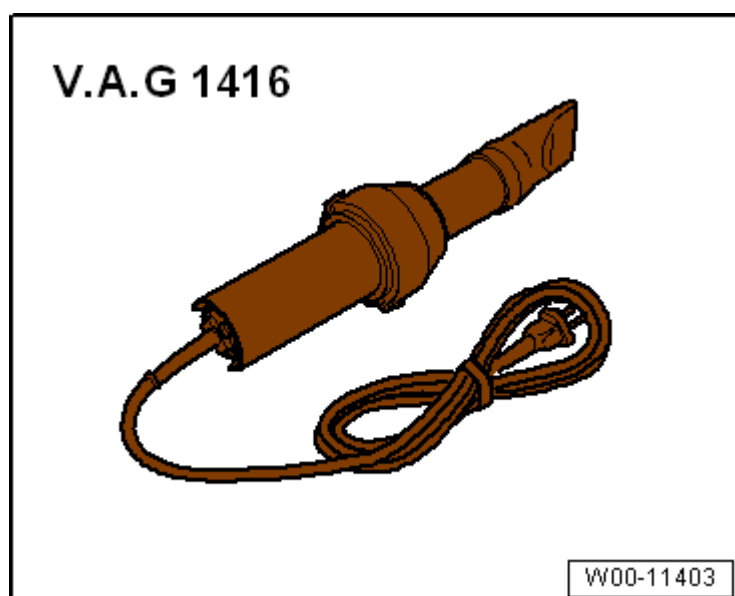
Removing and installing mounting for side member trim

Special tools and workshop equipment required

- ♦ Roller -3356-

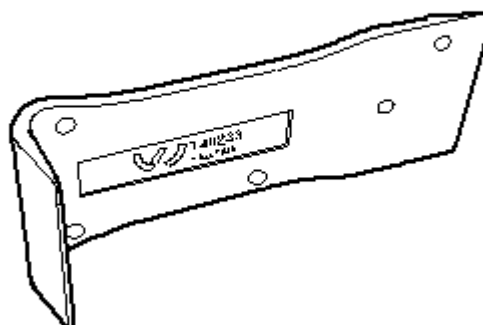


- ♦ Hot air blower -V.A.G 1416-



- ♦ Removal wedge -T40233-
- ♦ Cleaning solution -D 009 401 04-

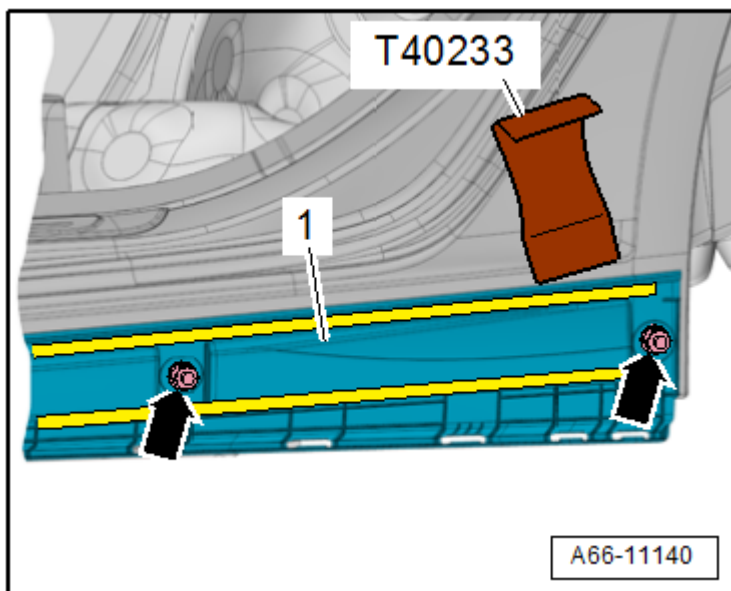
T40233



W00-10994

Removing

- Remove side member trim
→ **Chapter**.
- Unscrew nuts -arrows-.
- Carefully heat mounting -1- with hot air blower -V.A.G 1416-.
- Use removal wedge -T40233- to prise off mounting.



Installing

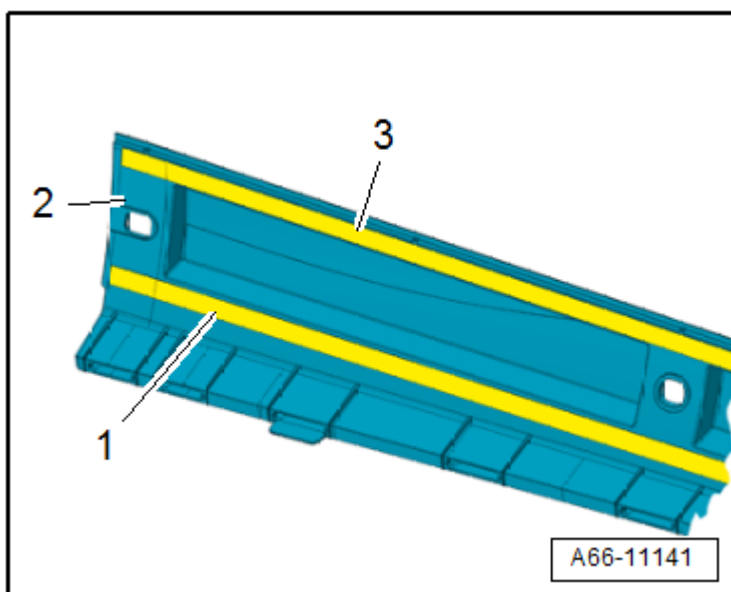


Note

If re-installing the same side member trim, adhesive tapes must be renewed ⇒ Electronic parts catalogue.

Install in reverse order of removal; note the following:

- Clean bonding surface on body with cleaning solution -D 009 401 04-.
- Pull protective film off adhesive tapes -1, 3-, press on side member trim -2- using roller -3356- and tighten nuts working from rear to front.
- Leave vehicle standing at room temperature for at least 30 minutes.
-



Wait at least 24 hours before putting any load on the component.

Tightening torques

- ♦ → Chapter „Exploded view - side member trim“.